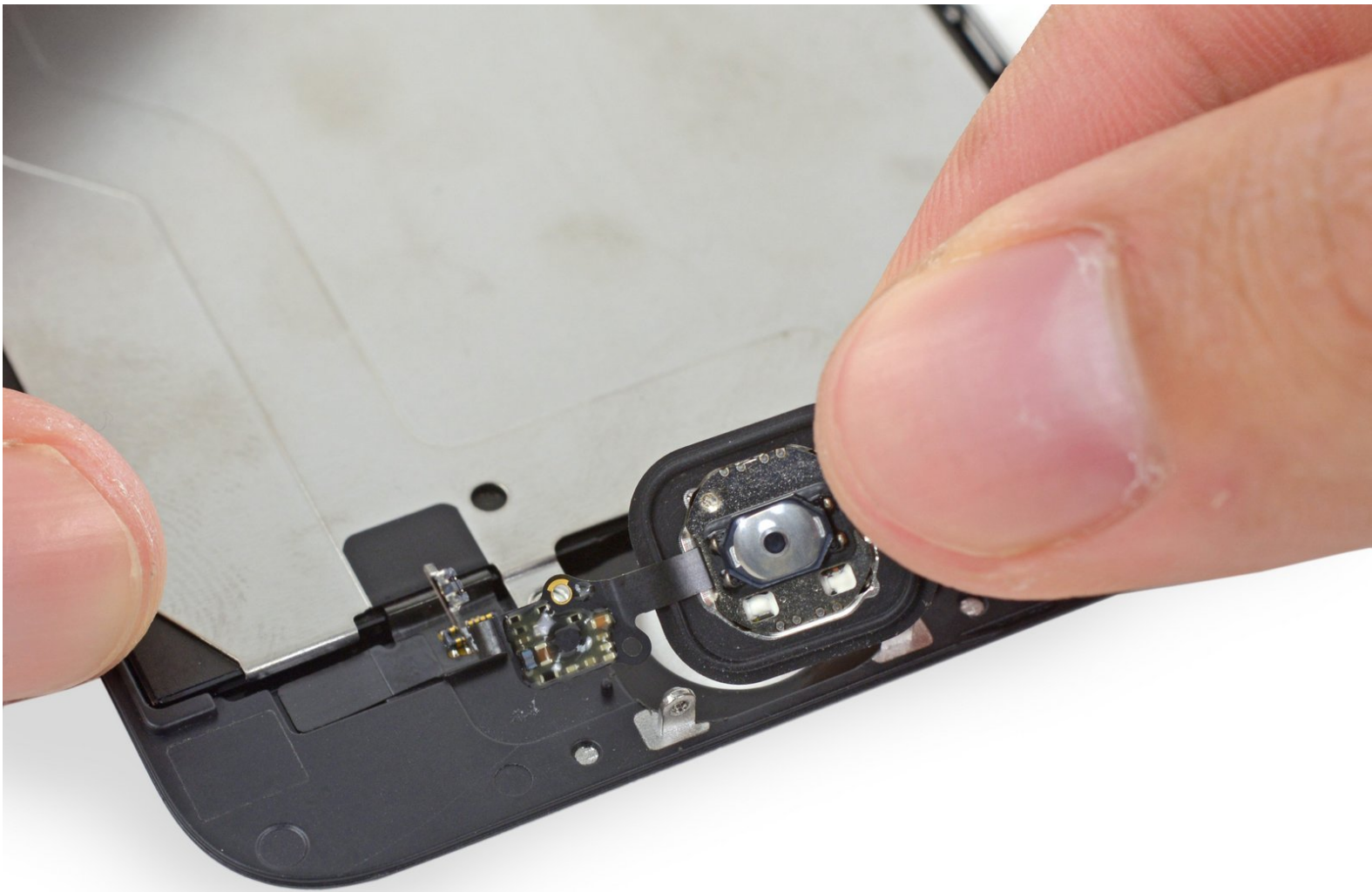




iPhone 6 Home Button Replacement

Prereq to remove the home button

Written By: Sam Goldheart



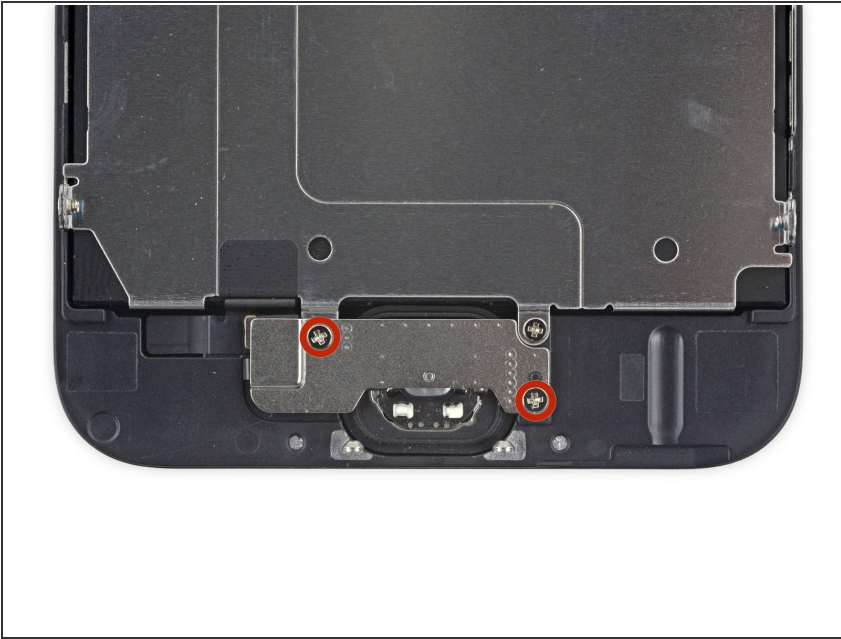
INTRODUCTION

prereq only (full home button guide includes removing gasket)

TOOLS:

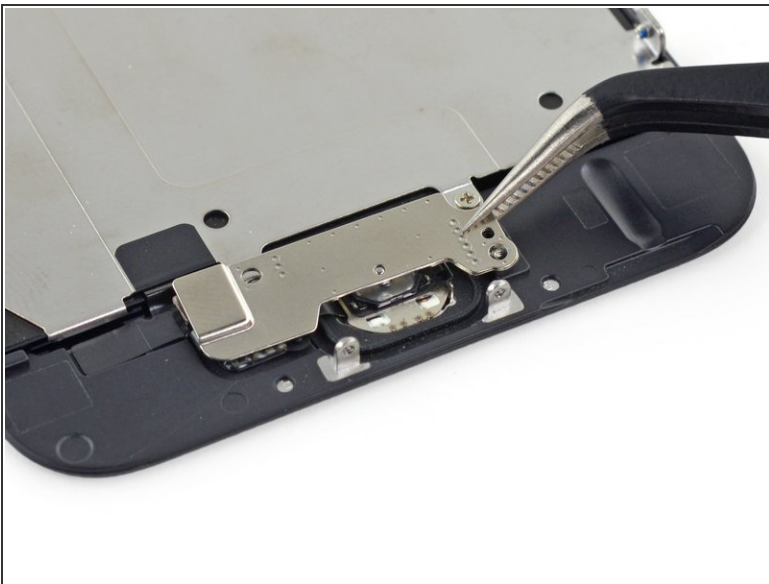
- [P2 Pentalobe Screwdriver iPhone](#) (1)
 - [iSlack](#) (1)
 - [iFixit Opening Tools](#) (1)
 - [Suction Handle](#) (1)
 - [Tweezers](#) (1)
 - [Phillips #000 Screwdriver](#) (1)
 - [Spudger](#) (1)
-

Step 1 — Home Button



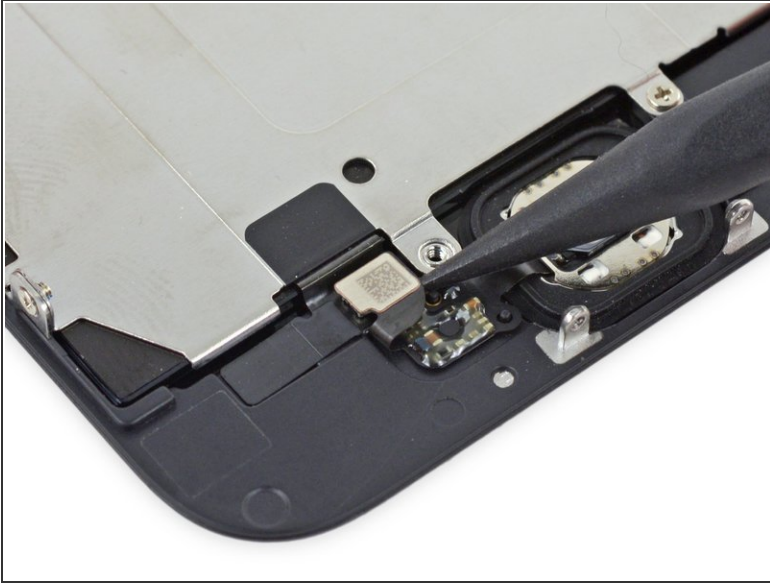
- Remove the two 1.9 mm Phillips screws securing the home button bracket.

Step 2



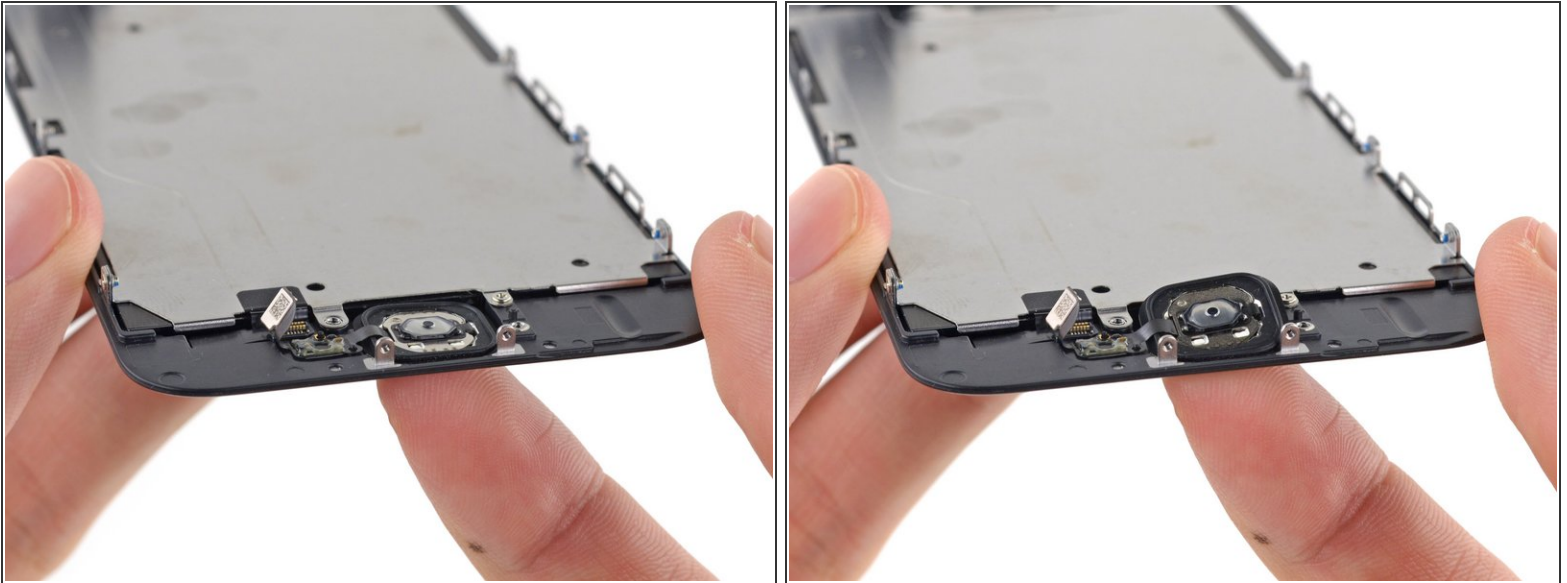
- Remove the home button bracket from the front panel.


Step 3




- Use the point of a spudger to disconnect the home button cable connector by pushing it up and away from the home button.

Step 4

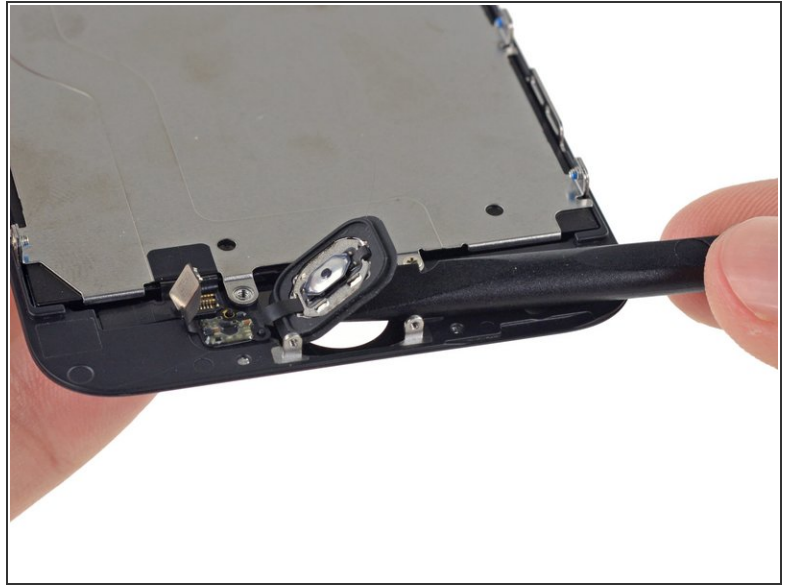
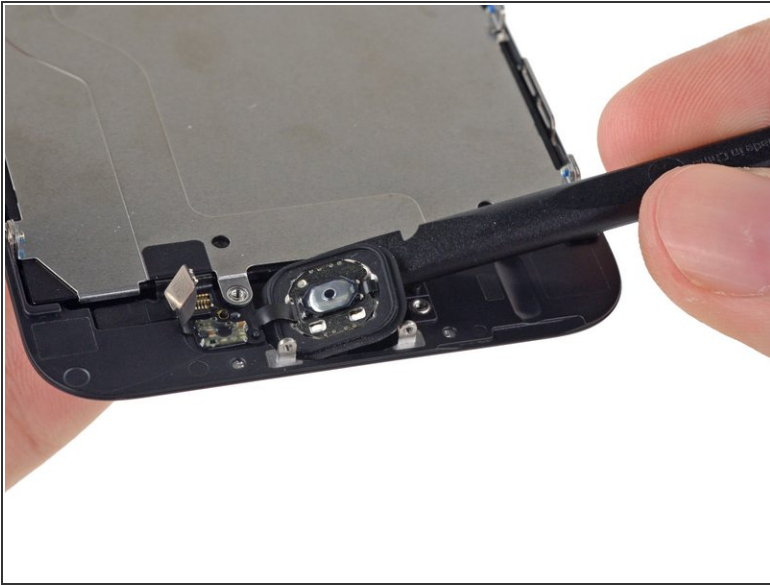


 The rubber membrane surrounding the home button is very thin and tears easily.

- Apply mild heat (with an [iOpener](#), heat gun, or hair dryer) to soften the adhesive securing the home button membrane.
- Using your fingertip, apply firm, constant pressure on the home button from the front side of the display assembly, until the membrane starts to separate from the front panel.

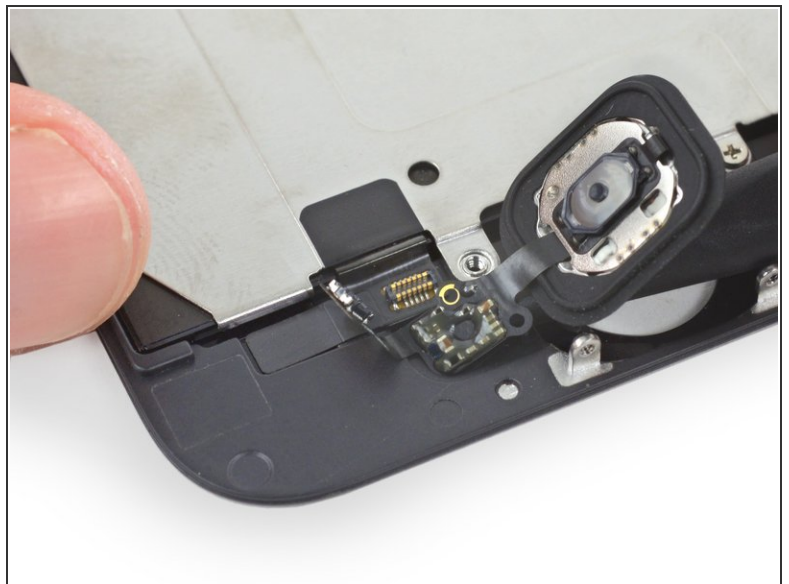
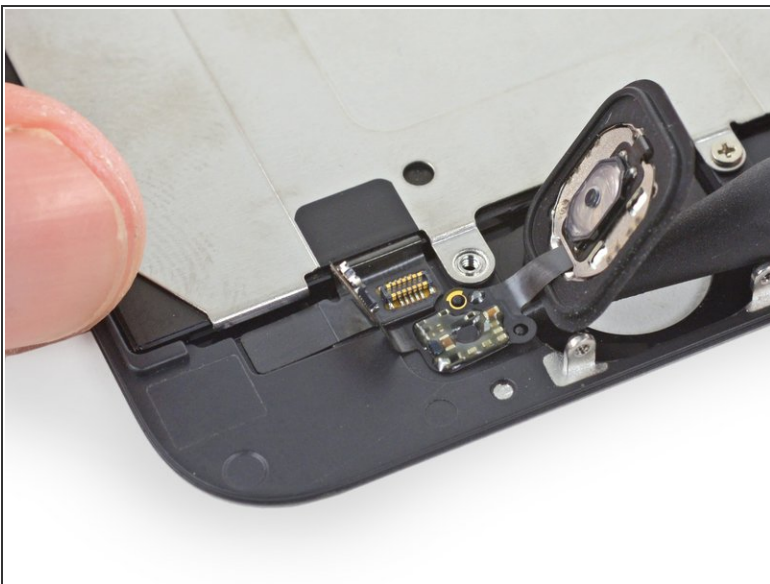
 Do not push the home button all the way through—you only need to get a corner free so that you can pry it free with a spudger.

Step 5



- Peel the home button the rest of the way off of the display by prying gently with a spudger.

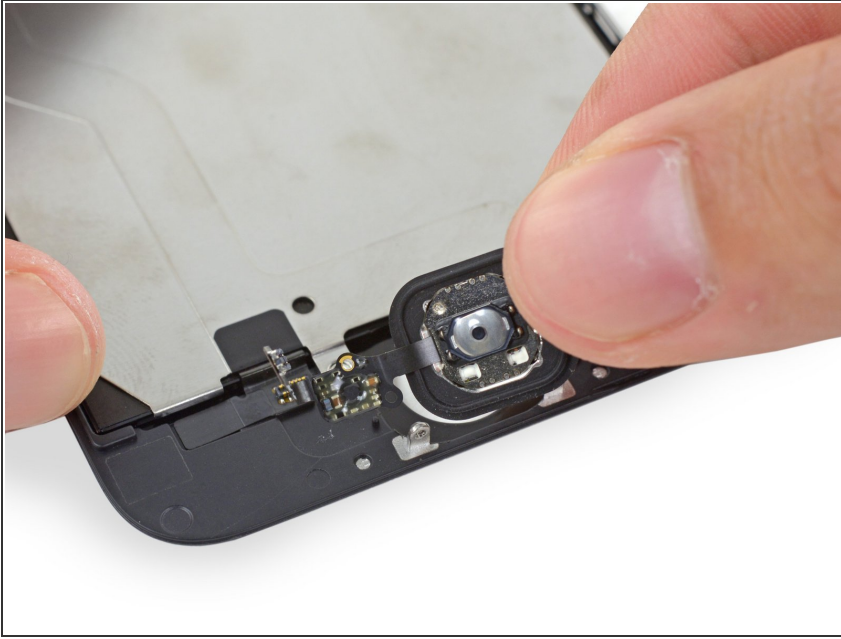
Step 6



- Use the point of a spudger to carefully separate the home button cable from the adhesive securing it to the front panel.

⚠ If the cable doesn't separate easily, apply heat using an [iOpener](#) or hair dryer to soften the adhesive, and try again. Be careful not to damage the cable.

Step 7



- Once all the adhesive has been separated, remove the home button from the front panel.
- ⓘ If you are replacing a broken front panel, there may be glass shards stuck to the home button. Carefully remove any remaining glass before transferring your home button to a new display.
- ★ Your replacement part may come with an [extra Phillips screw](#) already installed left of the Home Button. Remove the unnecessary screw so that you can reinstall the home button bracket.

To reassemble your device, follow these instructions in reverse order.